

OWNER'S MANUAL

eaz
liftTM
Since 1952

18K

5th Wheel Hitch



BEFORE YOU START

Dealer / Installer

Provide a copy of these instructions to the end user of this product. These instructions provide important operating and safety information for proper usage of this product. Demonstrate the proper use of the product with the end user. Have the end user demonstrate that they understand the proper use of the product.

End User

Read and follow all instructions included in the manual. Ask your Dealer / Installer for assistance if you do not understand the proper use of the product. Never remove any decals from the product.

WARNING

Failure to follow all of these instructions may result in death or serious injury.

NOTICE

Read and follow all instructions included in the manual. Ask your Dealer / Installer for assistance if you do not understand the proper use of the product. Never remove any decals from the product.

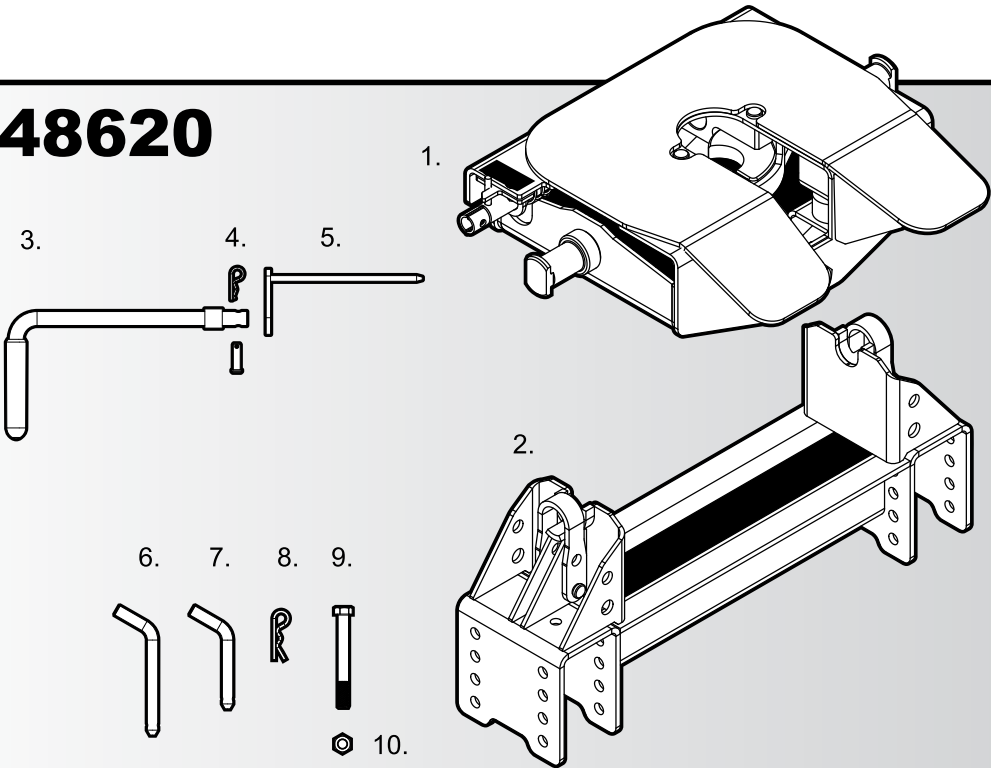
TABLE OF CONTENTS

The 18K Hitch	3
Parts List	3
Guidelines for Matching Truck to Trailer	5
Installation	7
Stationary Legs Installation	7
Crossmember Installation	9
Head Installation	11
Operation	13
Loading Instructions	13
Unloading Instructions	17
Removal Instructions	17
Maintenance	19
Warranty	21

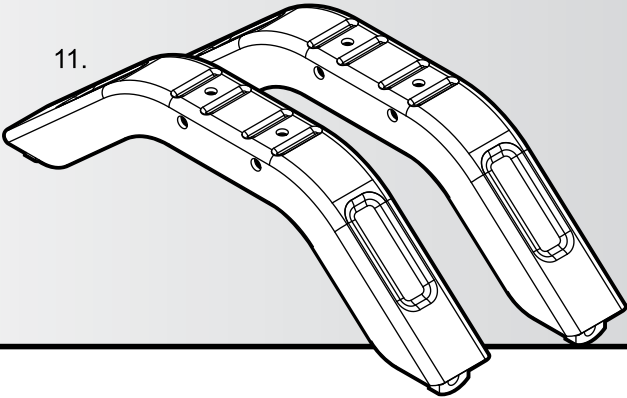
18K 5th WHEEL HITCH

**18K removable 5th wheel hitch.
Get carried away with convenience.**

48620



48621



See installation kit for detail on mounting plate and brackets.

HITCH

Parts List:

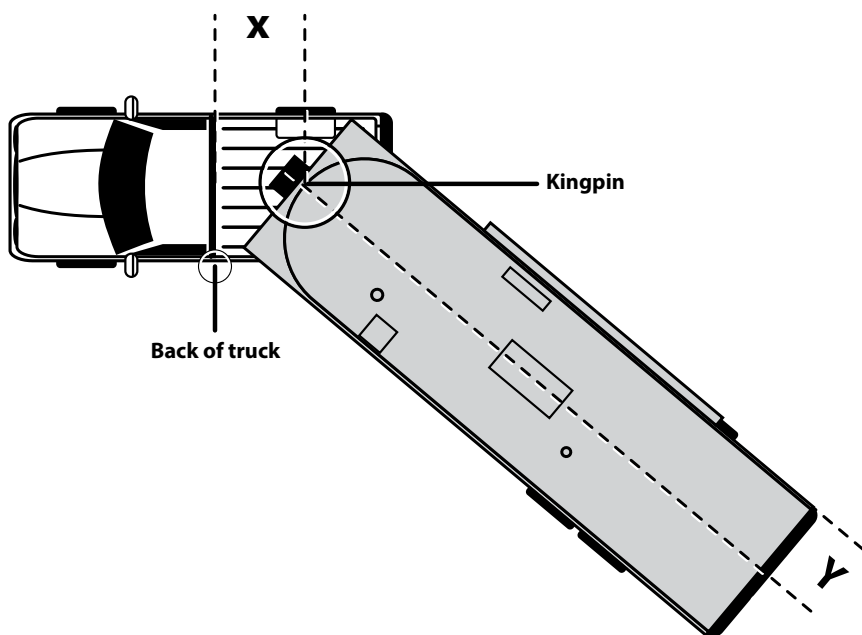
1. (1) Head Unit
2. (1) Crossmember
3. (1) Hitch Handle
4. (1) Clevis Pin and Hairpin Cotter Clip
5. (1) Secondary Lock Pin
6. (2) 1/2" x 4" Hitch Pin
7. (4) 1/2" x 2-3/4" Hitch Pin
8. (6) Hairpin Cotter Clip
9. (4) 1/2" x 4-1/2" Bolt
10. (4) 1/2" Nut
11. (2) Stationary Leg



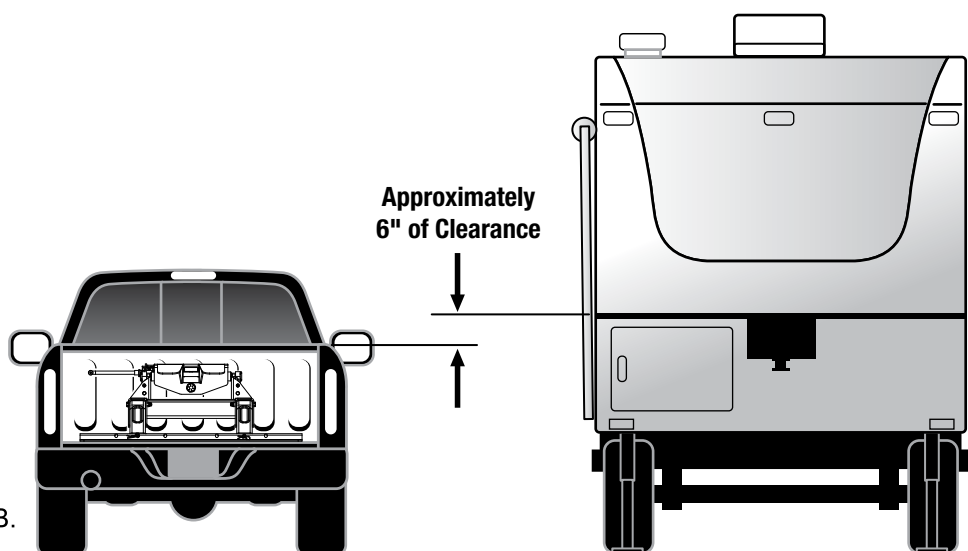
Tools Needed

- (1) 3/4 Wrench
- (1) 3/4 Socket
- Torque wrench (Capable of 75 ft-lb)
- Eye protection
- Gloves

TOOLS



A.

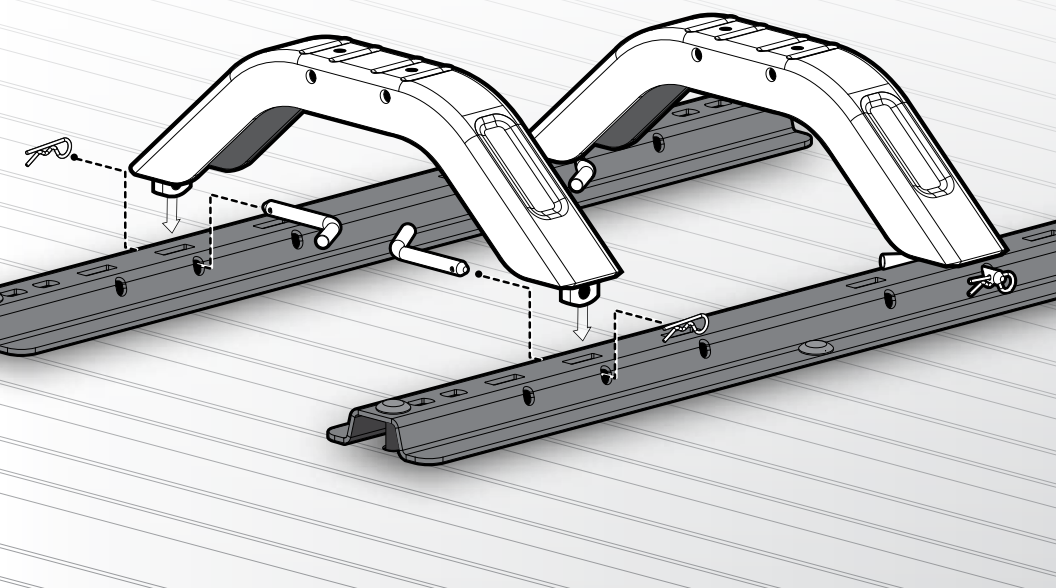


B.

GUIDELINES

Guidelines for Matching Hitch, Truck and Trailer:

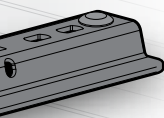
1. Trailer and all of its contents together must not exceed the truck, hitch and/or trailer tow rating.
2. Towing vehicle must have a manufacturer's rated towing capacity equal to or greater than the gross trailer weight.
Gross Trailer Weight = Trailer + Cargo + Water in tanks.
3. Gross Trailer Weight must not exceed 18,000 lb (4,500 lb vertical load)
4. Long bed trucks are recommended for towing fifth wheel trailers because they allow a greater turning radius. NOTE: The distance from the back of the truck cab to the center of the Kingpin (Dim X) should be 4" greater than one-half the trailer width (Dim Y). Fig. A
5. The height of the hitch and kingpin box needs to be adjusted so that the trailer tows close to level, allowing approximately 6" of clearance between the top of the truck bed and the overhang of the trailer. Fig. B

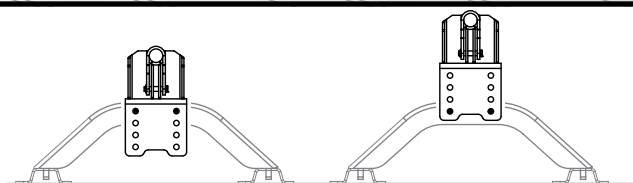
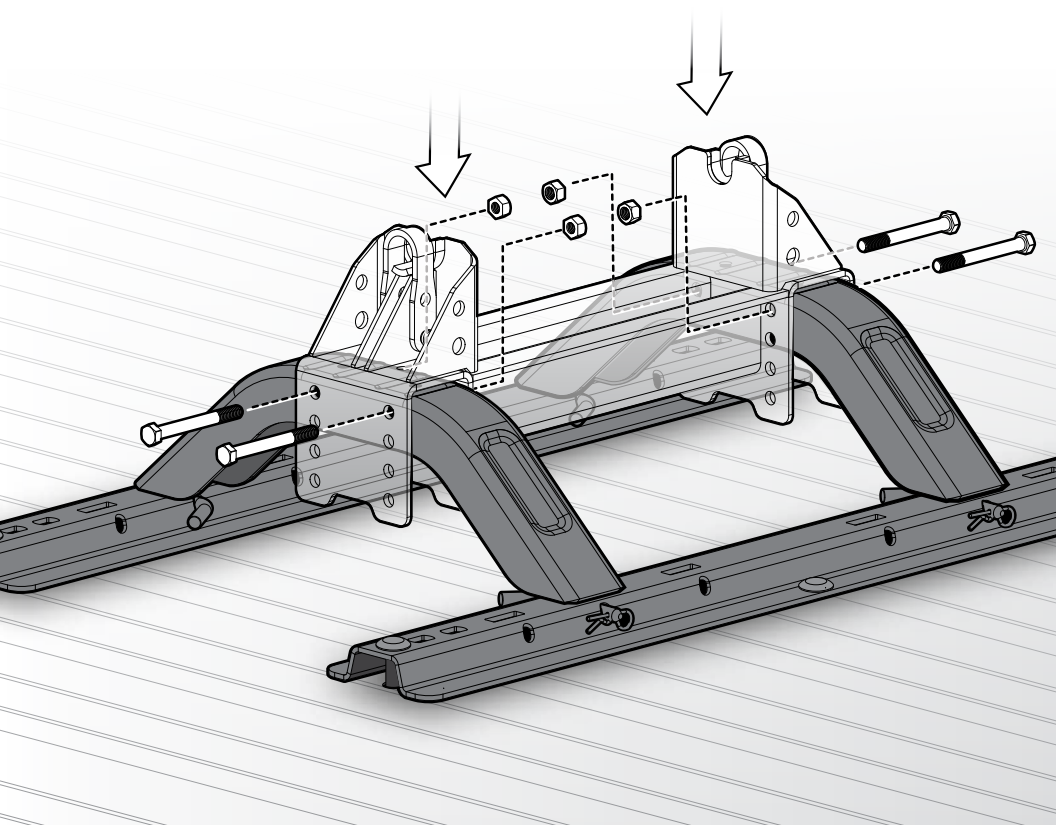


INSTALLATION

Stationary Legs:

1. With the trailer level, back the truck under the kingpin box.
(Do not back up with the hitch in the truck bed at this time.)
Measure from the floor of the bed to the bottom of the kingpin box. Record measurement-This will be used to determine height adjustment of 5th wheel on page 12 "Installing the Head". When done, pull truck forward to allow space to install 5th wheel.
2. Install stationary leg by inserting downward tabs into the middle set of rectangles on each side of base rail.
3. Install 1/2 x 2-3/4" Hitch Pin from center through base rail and stationary leg tabs.
4. Install Hairpin Cotter Clip.





18K

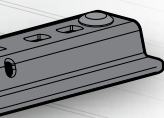
9 Installation

Adjustable height (14.5"-18").

INSTALLATION

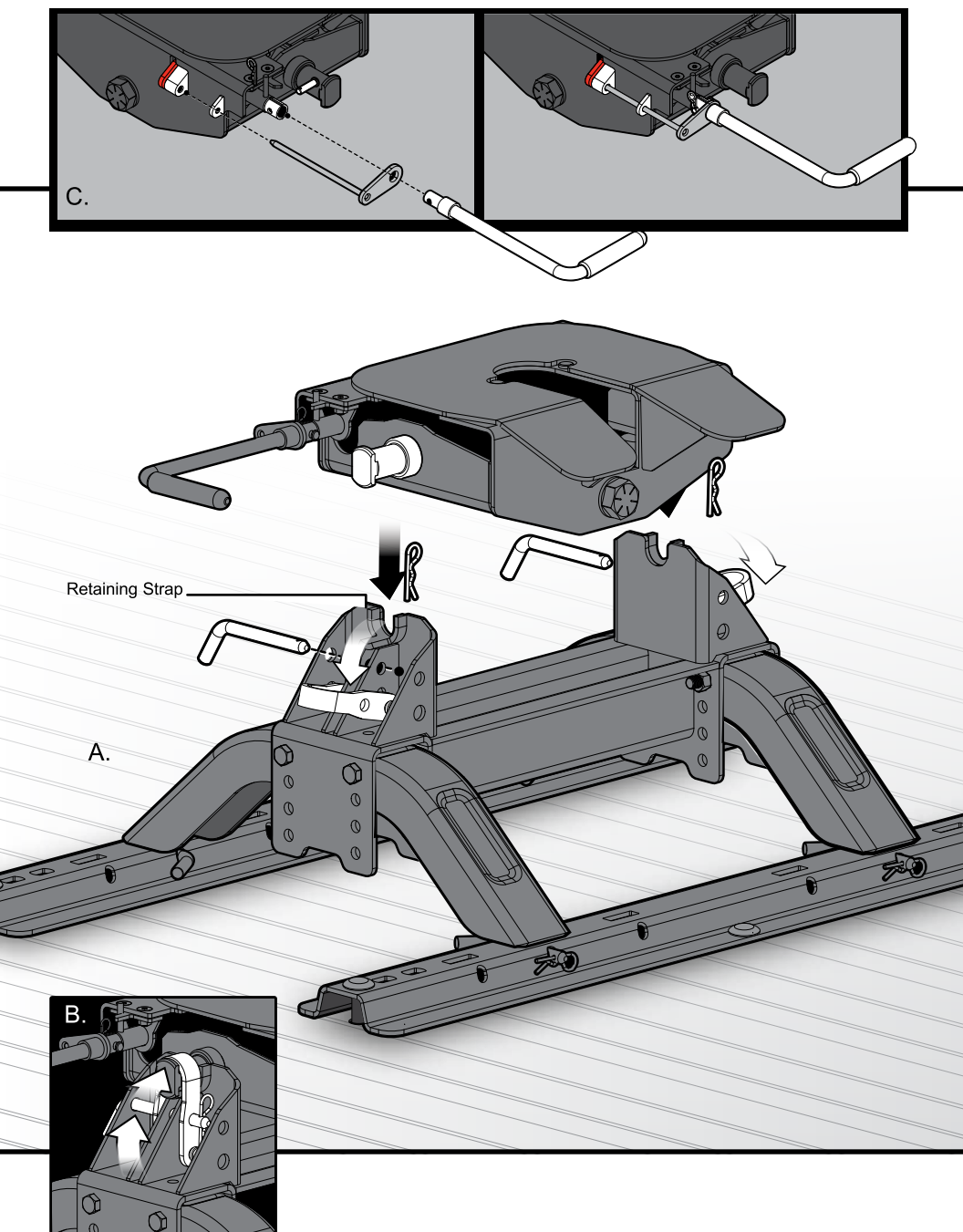
Crossmember:

1. Slide Crossmember down over legs as shown.
2. Insert (4) 1/2" x 4-1/2" bolts in Crossmember mounting holes to set hitch height.
3. Thread nuts on bolts. Do not tighten at this time.



WARNING: DO NOT position yourself or others under the trailer king-pin area or between the truck and trailer during coupling or uncoupling. Serious injury or death may occur. If it is necessary to place any part of your body under the trailer or between truck and trailer:

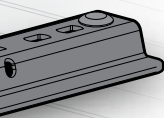
- All tires **MUST** be blocked in front and behind
- Trailer landing gear **MUST** be resting on firm ground
- Truck **MUST** be stationary, in park, with emergency brake on.



INSTALLATION

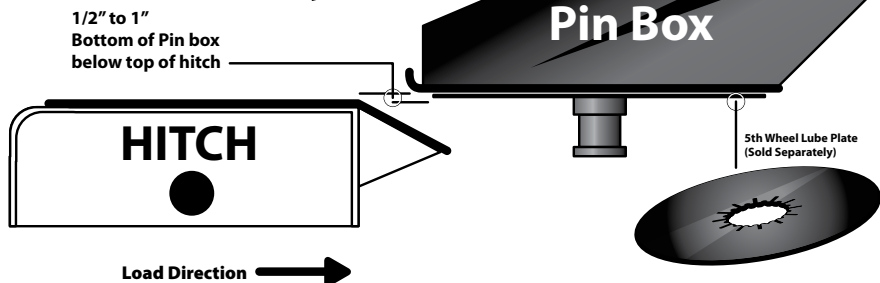
Installing the Head:

1. Install the release handle and secondary safety pin using pin and clip. (Fig. C.)
2. Install Head on to Crossmember saddle. (Fig. A.)
3. Rotate head retaining strap up over head pivot pin. (Fig. B.)
4. Insert 1/2" x 4" Hitch Pin through upper holes in Crossmember and retaining strap. (Fig. B.)
5. Install Hairpin Cotter Pin.
6. Measure from the bed to the top of Head. Reference measurement taken from page 8 "Stationary Legs". If adjustment is needed, remove Head and remove bolts from Crossmember. Adjust Crossmember to obtain correct height. Reinstall Crossmember bolts and thread nuts on bolts. Do not tighten at this time.
7. Reinstall the head unit on to Crossmember. Reinstall 1/2 x 4" Hitch Pin to secure Head. Tighten 1/2" Crossmember bolts to 75 ft-lbs.



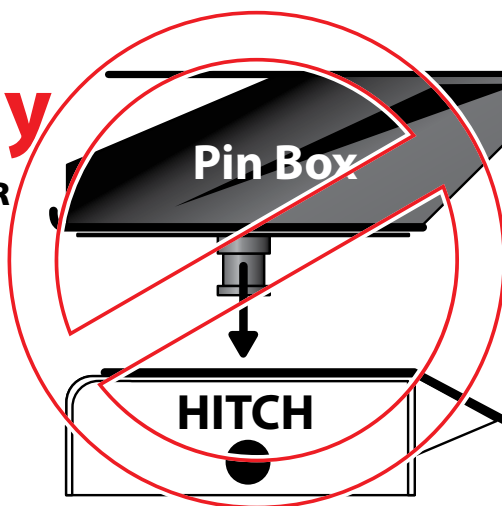
Our hitches are designed to be installed using ordinary hand tools with little to no modification to the towing vehicle.

Right Way



Wrong Way

**NEVER LOWER THE TRAILER
ONTO THE HITCH**



OPERATION

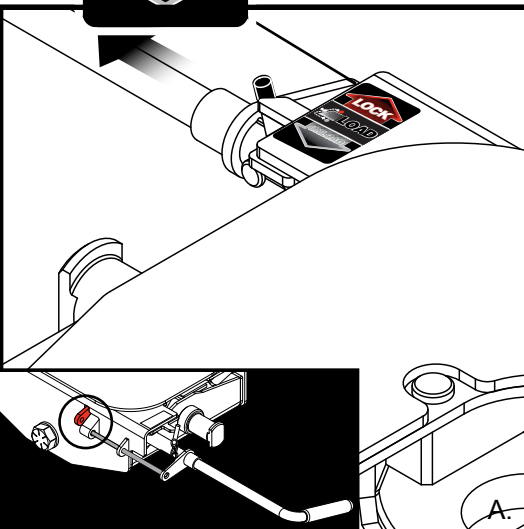
Loading Instructions:

1. Note: DO NOT TRY TO LOWER THE TRAILER INTO THE HITCH!
This will cause damage to the jaws as well as the kingpin.

Never lower the Kingpin into the hitch using the trailer jacks. This is a very dangerous practice and will result in the Kingpin sitting on top of hitch instead of inside. The trailer will not be attached to the truck for towing causing serious damage and possibly injury or death. (See Illustration)

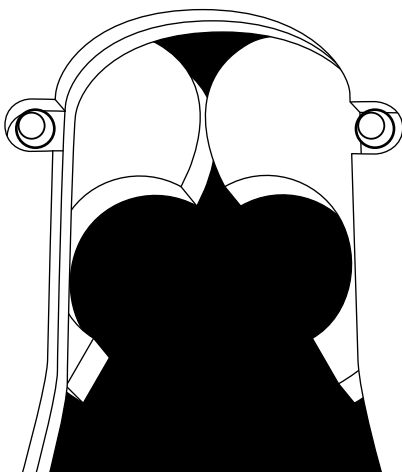


Pull the handle out



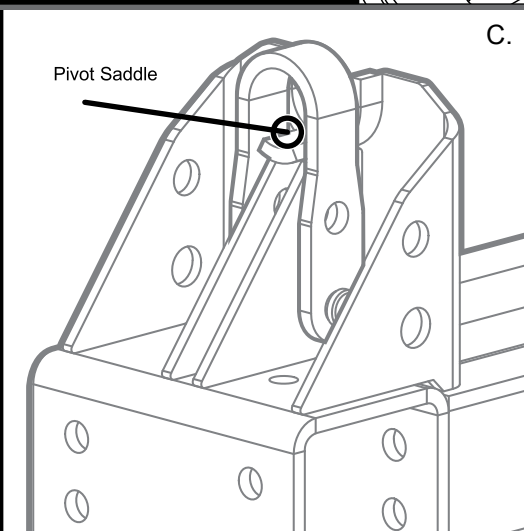
A.

B.

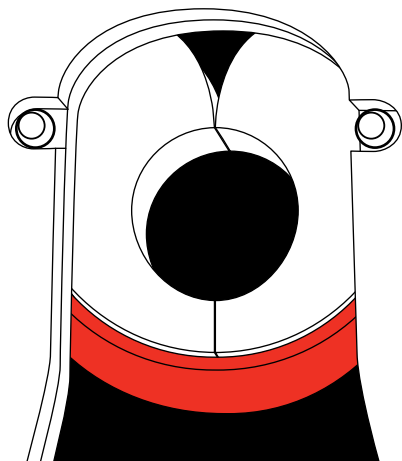


C.

D.



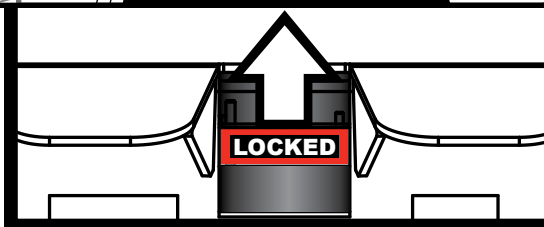
Pivot Saddle



18K

15

Operation



Locked needs to be all the way up before towing.

OPERATION

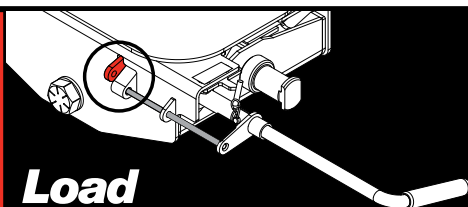
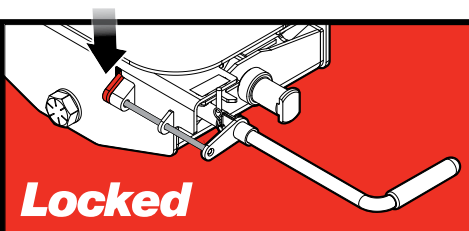
Loading Instructions:

1. The head unit is shipped from the factory with the retaining bail open and jaws closed.
2. Open the jaws. (Fig B.)
3. Pull the handle so that the pin sits in the LOAD position. (Fig A.) Now the hitch can be used.
4. Lube pivot saddles and slide plate. (Fig C.) If lube plate is not used, lube top plate of hitch.
5. Place blocks firmly against front and rear of trailer tires.
6. Lower the tailgate if necessary.
7. Using jacks to adjust the trailer height, lower the trailer so that the bottom of the king pin box is 1/2" to 1" below the hitch top plate. During the loading process the kingpin box will come in contact with hitch ramp. Note: Failure to follow instructions could result in damage to the trailer or the jaws of the hitch. Note: **DO NOT TRY TO LOWER THE TRAILER INTO THE HITCH!** This will cause damage to the jaws as well as the king pin.
8. As the truck backs up slowly, the front of the trailer will rise slightly as the trailer slides into the hitch.
9. As the king pin enters, the jaws will close around the king pin allowing the bail to close, locking the coupler. (Fig D.)
10. Secondary Safety Pin should be visible through the red bail.

Before towing perform a tug test as follows

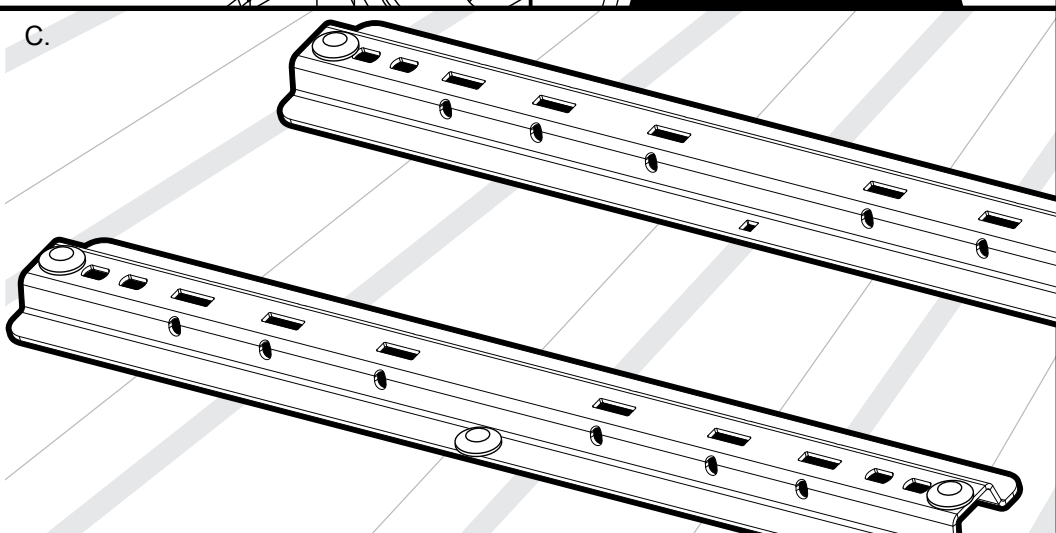
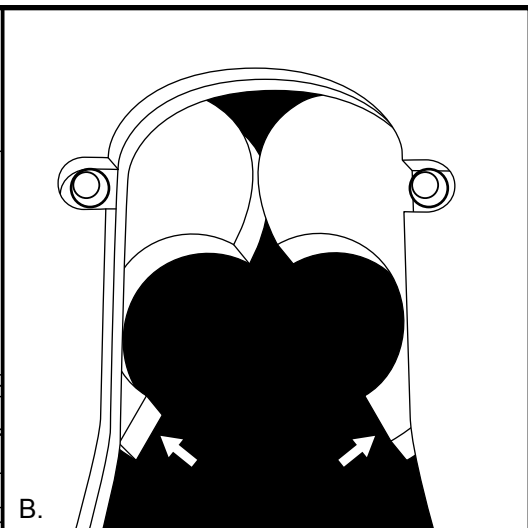
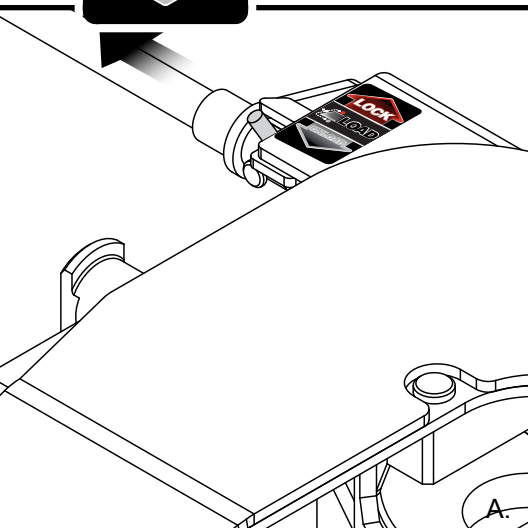
Ensure the landing gear of the 5th Wheel Trailer are extended to the ground, chock the tires, and attach the electrical and breakaway connector to the proper receptacles in accordance with your 5th Wheel Trailer owner's manual. Then apply the trailer brakes, and slowly try to pull the trailer forward. The trailer should prevent the truck from moving.

Remove the blocks from the wheels of the 5th Wheel Trailer; fully retract the trailer jacks and double check that the hitch is properly attached to your tow vehicle.





Pull the handle out



OPERATION

Unloading Instructions:

1. Block the trailer tires, both front and rear.
2. If necessary, start your truck and back up against the Kingpin to relieve pressure on the jaws. Set the parking brake, put the transmission into park and then turn off your vehicle.
3. Disconnect the electrical and breakaway connectors in accordance with your 5th Wheel Trailer owner's manual.
4. Lower the tailgate if necessary.
5. Use jack to raise the trailer until a small gap can be seen between the hitch top plate and the bottom of the kingpin box.
6. Pull the release handle and rotate pin to the UNLOAD position. (Fig A.)
7. Pull the truck forward to unlatch. Jaws will open automatically. (Fig B.)
8. Pull the handle and rotate to LOAD position to reload.

Removal Instructions:

1. Remove the pins from the crossmember and rotate retaining straps down.
 2. Remove the head unit from crossmember.
 3. Remove cotter pins and 2-3/4" hitch pins.
 4. Lift crossmember and legs off bed rail.
-

MAINTENANCE

1. Before each hitching procedure: If lube plate is not used, lube top plate of hitch. Lube pivot saddles, jaws and slide plate.
2. When ready to store: Clean with water before storing. Store in a clean and dry environment to prevent wear to hitch.

After the first 100 miles, and at least once a year thereafter, inspect all bolts for proper tightness. Retighten nuts if needed. All fasteners 1/2" diameter, torque to 75 ft lb.



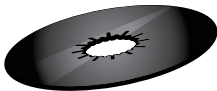


#48500-12" Gooseneck Adapter
 #48501-15" Gooseneck Adapter
 #48490-17" Gooseneck Adapter
 #48560-Gooseneck Hitch

Designed for
 Short/Long Beds Trucks



#48620 - Head and Crossmember
 (Sold Separately)
#48622 - 5th Wheel Slider
 #48590 - Mounting Rail (Sold Separately)



#44664-10" Diameter
 #44674-12" Diameter



GOOD 2 GO™

Gooseneck Hitch

- Ball plate with 2-5/16" ball threads in/out
- 30,000 lb rating. (7,500 lb vertical load)
- Requires only one 3" hole in truck bed

Gooseneck Adapter

- Automatic latching coupler attaches to any 2-5/16" gooseneck ball
- Converts fifth wheel trailer to gooseneck
- Drop down style coupler allows full range of motion for easy hookup and disconnect
- 30,000 lb rating (7,500 lb vertical load)
- 17", 15" or 12" overall height

5th Wheel Slider

- Adjustable height from 17.5" to 21"
- Displace hitch 9" toward tailgate for tight maneuvering
- Visual flag on each rail/upright to give confidence the slider has locked in both towing and maneuvering positions
- Secondary lock pin ensures primary locking mechanism has fully locked
- Fully enclosed rollers and locking mechanism to minimize debris buildup
- 18,000 lb rating

5th Wheel Lube Plate

Cushions vibrations and helps protect your 5th Wheel against friction and wear. Constructed from high-density wear-resistant plastic. No drilling or tools required for installation.

WARRANTY

This Warranty applies solely to the Fifth Wheel Hitch (the "Product") manufactured by Camco Manufacturing, Inc. ("Camco")

1. **Warranty and Warranty Period.** Camco warrants to the Product's original purchaser or consumer (the "Purchaser") that the Product will be free of defects in manufacture and workmanship for a period of 5 Years from the date of consumer purchase or Camco will replace the Product free of charge (the "Warranty"). This Warranty is non-transferrable and applies only to the original vehicle on which the Product was installed.
2. **Limitations on the Warranty.** This Warranty does not cover the following: (a) normal wear and tear; (b) service or labor charges which are incurred in removing or replacing any Product; (c) the finish placed on the Product; (d) Product damage or failure which occurs as a result of abuse, neglect or misuse in any manner; and (e) damage which occurs to a Product that is misapplied, overloaded, improperly installed, or altered in any manner by anyone other than Camco.
3. **Obligation of Purchaser.** To obtain the benefits of this Warranty, the Purchaser must complete the following steps: **(a) fill out online Warranty Registration within 10 days of purchase at www.camco.net/warranty;** (b) promptly present the defective Product together with the proof of purchase to any of Camco dealer, distributor, or return it to the factory located at 121 Landmark Drive, Greensboro, NC 27409 and (c) pay all handling, transportation, and shipping charges incurred for the return of the defective Product. Any defective Product returned to Camco shall become the property of Camco.
4. **Obligations of Camco.** Subject to the terms and limitations set forth in this Warranty, Camco's sole obligation will be to replace for the original Purchaser free of charge any Product that is found to be defective.
5. **Legal Rights.** THIS WARRANTY GIVES YOU SPECIFIC LEGAL RIGHTS AND YOU MAY ALSO HAVE OTHER RIGHTS WHICH VARY FROM STATE TO STATE. CAMCO MAKES NO EXPRESSED OR IMPLIED WARRANTY OF MERCHANTABILITY OR FITNESS FOR A PARTICULAR PURPOSE. SOME STATES DO NOT ALLOW LIMITATIONS ON HOW LONG AN IMPLIED WARRANTY LASTS, SO THE ABOVE LIMITATIONS MAY NOT APPLY TO

YOU. CAMCO ASSUMES NO LIABILITY OR RESPONSIBILITY FOR BODILY INJURY THAT MAY BE INFLICTED ON THE PURCHASER, OPERATOR, SPECTATOR OR GENERAL PUBLIC WHO IS IN THE GENERAL AREA WHILE THIS EQUIPMENT IS IN USE, FOR THE LOSS OF THE USE OF ANY VEHICLE, LOSS OF TIME, RENTAL OF VEHICLES, LOSS OR DAMAGE TO PERSONAL PROPERTY, EXPENSES SUCH AS GASOLINE, TELEPHONE, LODGING, OR TOWING, OR ANY OTHER INCIDENTAL OR CONSEQUENTIAL DAMAGES INCURRED AS A RESULT OF THE USE OR OWNERSHIP OF ANY PRODUCT. SOME STATES DO NOT ALLOW THE EXCLUSION OF A LIMITATION OF INCIDENTAL OR CONSEQUENTIAL DAMAGES, SO THE EXCLUSION OR LIMITATION SET FORTH MAY NOT APPLY TO YOU. REPLACEMENT OF THE PRODUCT IN THE MANNER PROVIDED ABOVE SHALL CONSTITUTE FULFILLMENT OF ALL LIABILITIES OF CAMCO TO THE PURCHASER WHETHER BASED ON CONTRACT OR OTHERWISE.

CAMCO RESERVES THE RIGHT TO MAKE CHANGES IN DESIGN OR TO MAKE ADDITIONS OR IMPROVEMENTS WITHOUT BEING OBLIGATED TO INSTALL THE SAME UPON PRODUCTS COVERED BY THIS WARRANTY. THIS WARRANTY IS VALID ONLY IN THE UNITED STATES AND CANADA.



eaz

lift

TM

S i n c e 1 9 5 2



Call toll free or visit us online
for the dealer nearest you.
1-800-334-2004 www.camco.net