



# 2020+ ADAPTER KIT CHEVY/GMC 2500 / 3500

MODEL #48606

CAREFULLY READ THE FOLLOWING INSTALLATION INFORMATION.

Item no	Description	Included
1	Carraige bolt, 5/8"-11 x 1-3/4" Grade 8, zinc plate	2
2	Frame spacer	2
3	Frame bracket, Driver side, GM 2020	1
4	5/8" conical washer, serrated, zinc plated	2
5	5/8" locking hex nut, zinc plate	2
6	1/2" conical washer, serrated, zinc plated	4
7	1/2" locking hex nut, zinc plate	4
8	Carraige bolt, 1/2"-13 x 4-1/2", grade 5, zinc plate	4
9	Strap bracket, GM 2020	2
10	Frame bracket, Passenger side, GM 2020	1
11	Wire bolt leader, 5/8"-11, under bed install kits	2
12	Offset washer, zinc plated	4

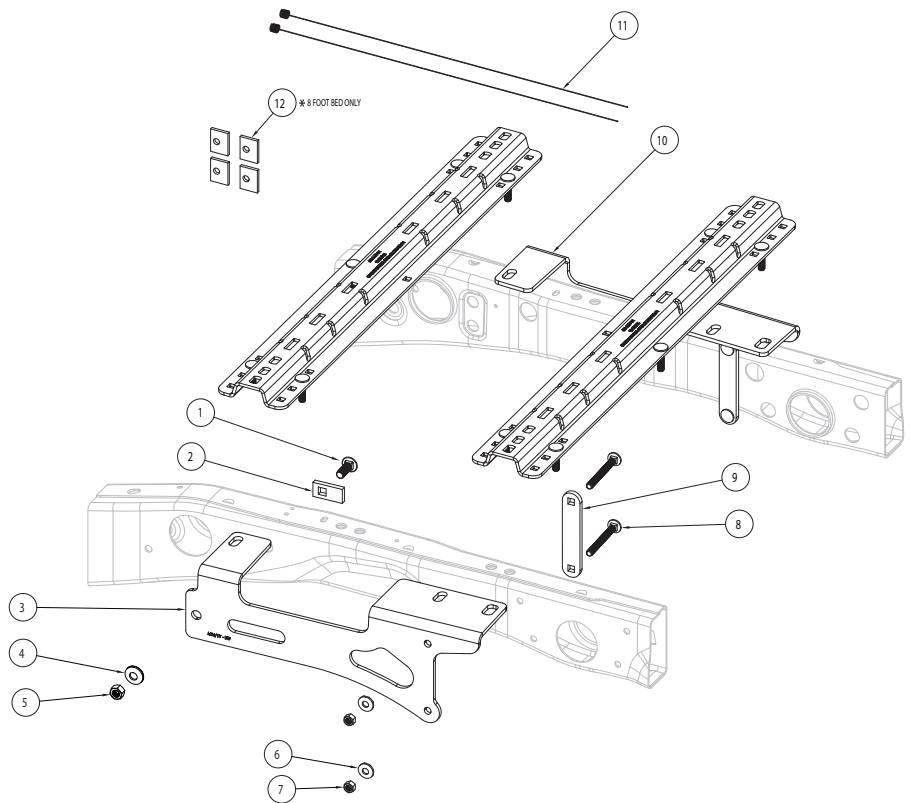
BASE RAILS AND ALL OTHER HARDWARE SHOWN INCLUDED IN PART #48630

## WARNING

- Do not install mounting rails over plastic bed liners. Plastic liners must be trimmed away to allow base rails to contact bed directly. Spray in bed liners are acceptable.
- These instructions are guidelines only. Actual installation is the responsibility of the installer and the owner.
- Use only supplied hardware for installation.
- Before beginning installation of mounting rails, brackets, and hitch measure to make sure adequate clearance between the truck and trailer exists to allow for turns.

### Tools Needed

Torque Wrench (210 ft.-lbs. minimum capacity)	Drill
5/16" Socket Wrench	15/16" Socket Wrench
3/4" Socket Wrench	9/16" Drill Bit



## Installation Instructions

- Lower and remove the spare tire if extra room is required. Remove plastic wheel well liners to allow access to frame. Before drilling electrical and brake components may need to be temporarily moved to prevent damage. If more than one hitch product will be used with the bed rails both should be used at the same time to align the second mounting rail. This will ensure the fit of both products
- Place rear bed rail centered between the wheel wells in the bed such that the center of the 2 bed rails spaced at 22" is 3/4" in front of the rear axle (Fig.3).
- Center punch the center of the third hole from each end of the rail.

### CAMCO MFG., INC.

121 LANDMARK DRIVE / GREENSBORO, NC 27409 / USA  
1-800-334-2004  
WWW.CAMCO.NET

**LIMITED WARRANTY:** Camco warrants this product to be free from defects in material and workmanship under normal use and service conditions for 12 months from the date of first purchase. Camco's liability is limited solely to the replacement of any defective product returned to us. To the extent allowable by law, Camco makes no other warranty, either expressed or implied, nor assumes any liability for incidental or consequential damages resulting from the use of this product or for breach of warranty of merchantability or fitness for a particular purpose. Submit warranty claims to Camco Manufacturing, 121 Landmark Drive, Greensboro, NC 27409.

CONTINUED ON PAGE 2

CD895157 102115R1 #320

**CAMCO**

**CAMCO**

## PRINTING INFORMATION (Do not Print)

Item Name: Eaz-Lift Adapter Kit Instructions, Chevy/GMC 2500/3500  
New RM#: CD895157  
Old RM#: na  
Drawing #: 1021115  
Colors: 1/1 Black  
Coating: na  
Size: 8.5" x 11"  
Stock: 60# or 80# Text  
UPC: na  
Notes: na  
Rev #: 1  
Date Released: 320

### ESKO Dieline Key

Cut Line

Crease Line

Perforated Line

Glue Area



PSL

CutContour

No intentional introduction of Lead (Pb), Cadmium (Cd), Hexavalent Chrome and Mercury (Hg) allowed in manufacture of this packaging material. The sum of the concentration levels incidentally introduced not to exceed 100 PPM by weight.

- Position Driver side and Passenger side frame brackets along frame as shown in (fig. 1), ensure punch marks line up with the slots in the mounting bracket. Adjust punch marks if required and drill\* 1/8 holes. Check that all holes align with slots of the mounting bracket. Remove mounting bracket. Enlarge hole to 9/16"\*

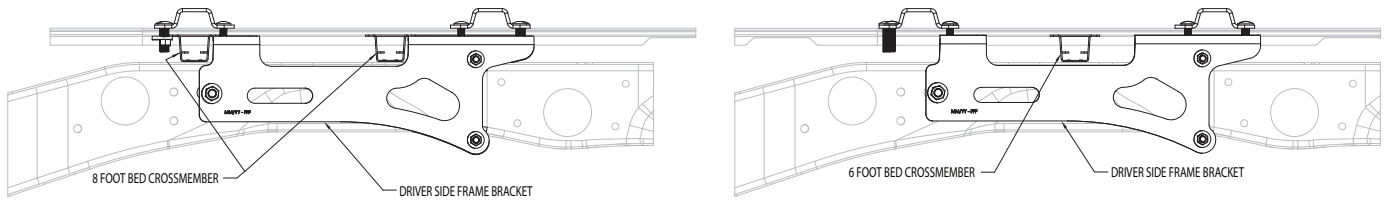


Fig. 1

- Repeat process for front bed rail.
- Position Driver Side Mounting bracket #3 and attach using two #8 carriage bolts (1/2" X 4 1/2"), one #9 Strap Bracket, two #6 1/2" conical washers and two #7 1/2" hex nuts. Tighten nuts to hold bracket in position so that the hole in the other end of the mounting bracket is aligned with the elongated slot in frame.
- Install #1 carriage bolt (5/8" X 1 3/4") and #2 Frame Spacer through frame using #11 Wire Bolt Leader. Attach carriage bolt to Leader and pass the wire through the Frame Spacer. Pass the free end of Leader through the access hole and out the frame through the hole in the Mounting Bracket. Pass the Frame Spacer through the access hole (fig. 2) followed by the carriage bolt. Pull free end until the bolt is extended through the Mounting Bracket. Carefully remove Wire Bolt Leader and install #4 5/8" conical washer and #5 5/8" hex nut.
- Repeat process for Passenger Side Bracket #10.
- Follow Bed Rail installation instructions to install Bed Rail hardware, do not tighten to torque specifications at this time. 8 foot truck bed installation, use four #12 Offset Washer as shown in (fig. 2).
- Tighten all frame bracket hardware to required torque specifications, all 1/2" hardware to 110ft. lb. and 5/8" hardware to 210 ft. lb.
- Tighten all Bed Rail hardware to required torque specifications per bed rail installation instructions.

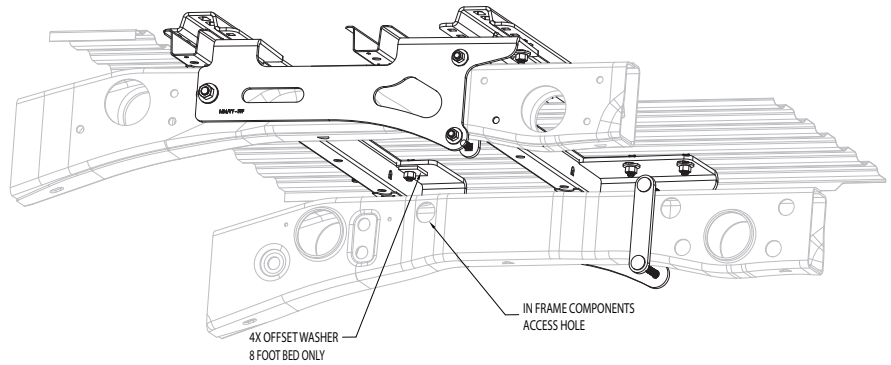


Fig. 2

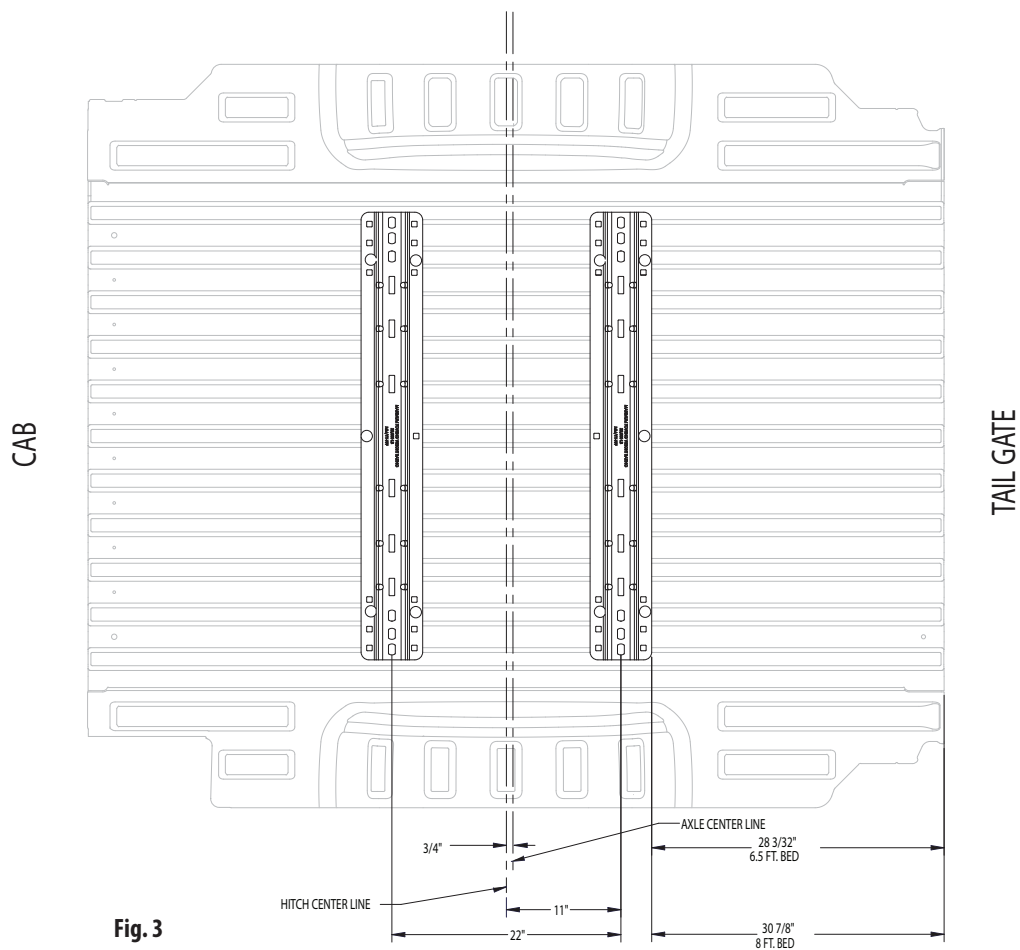


Fig. 3